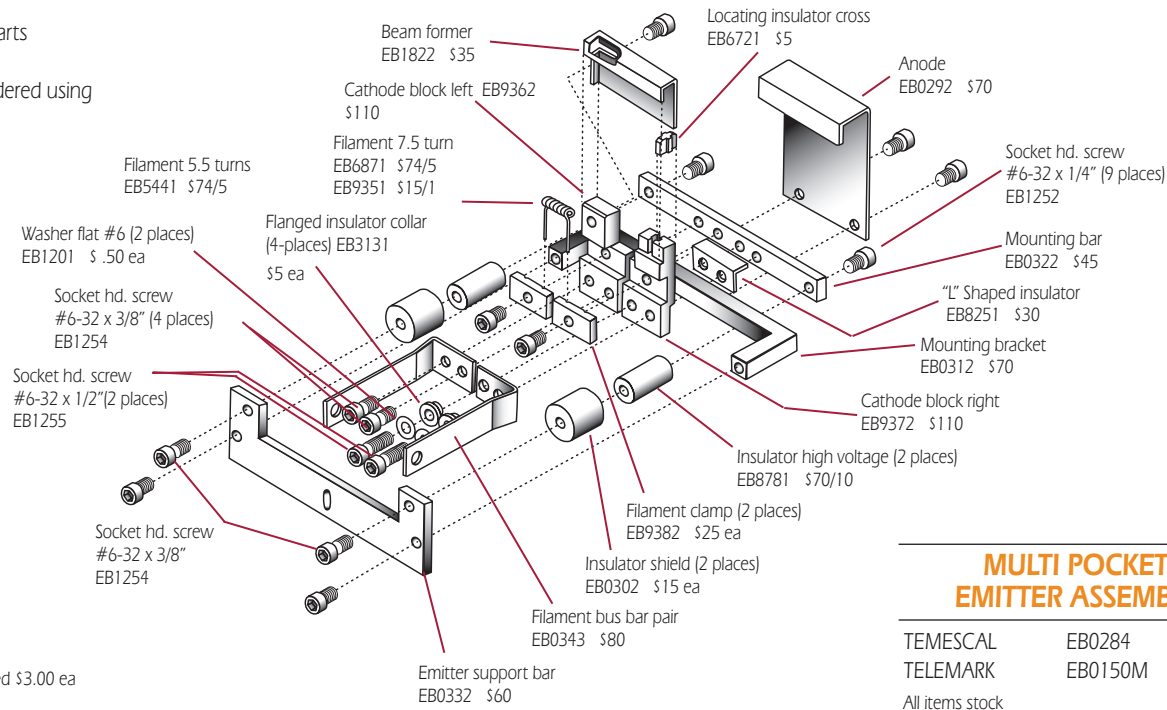


MULTI POCKET EMITTERS

Telemark and Temescal parts are interchangeable. Telemark parts can be ordered using Temescal part numbers.



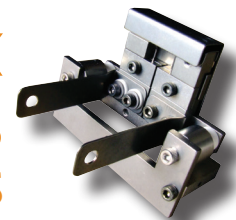
MULTI POCKET EMITTER ASSEMBLY

| | | |
|----------|---------|-------|
| TEMESCAL | EB0284 | \$700 |
| TELEMARK | EB0150M | \$700 |

All items stock

Filament alignment gauge EB4121 \$10
Screws vented and moly coated \$3.00 ea
Screw kit EB1280 \$40

TEMESCAL, SATISLOH & TELEMAR ELECTRON BEAM GUN PARTS



SAVE & Stock Delivery

FILAMENTS

| | | | Fil-Tech | |
|-------------|-------------------|----------------|----------|--------|
| TEMESCAL | SuperSource® | 0317-6871-0 | EB6871 | \$ 74 |
| | SuperSource | 0303-9351-0 | EB9351 | 15/1 |
| | SuperSource | 0515-5441-0 | EB5441 | 74 |
| | High Performance® | 0916-8310-0 | EB8310 | 75 |
| | High Performance | 0916-8132-0 | EB8132 | 16/1 |
| TELEMARK | Multi Pocket | 273-0001-1 | EB0001 | 74 |
| | Multi pocket | 273-0002-1 | EB0002 | 74 |
| THERMIONICS | Multi Pocket | A112153 | EB6871 | 74 |
| SATISLOH | SuperSource | A7500823P-122M | EB6871 | 74 |
| | SuperSource | A7500823P-005M | EB6871-1 | 80 |
| | S Type | A7500336J-003M | EB8483-5 | 290/20 |
| SLOAN | 270 Gun | 126-710 | EB7910 | 150 |
| LEYBOLD | Hooked Ends | 10-094-226 | EB4226 | 190/10 |
| | S Type | 84830-005 | EB8483-5 | 290/20 |
| | Half moon | 812180313 | EB0313 | 65/5 |

New! JEOL
All filaments 5 per box except otherwise indicated.

INSULATORS

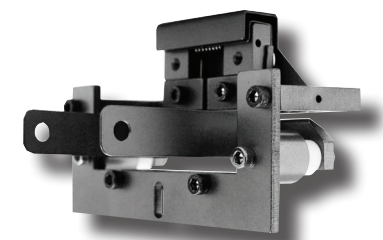
| | TEMESCAL | TEMESCAL | TELEMARK | Fil-Tech | |
|--------------------------|----------|-------------|------------|----------|-------|
| Flanged/Collar | | 0303-3131-0 | 273-0006-1 | EB3131 | \$ 5 |
| Locating/Cross | | 0303-6721-0 | 273-0005-1 | EB6721 | 5 |
| High Voltage | | 0602-8781-0 | 273-0010-1 | EB8781 | 70/10 |
| High Voltage | | 0418-4631-0 | | EB4631 | 7 |
| Cathode Block "L" Shaped | | 0916-8251-0 | 273-0008-1 | EB8251 | 30 |
| Sloan Insulator | | 126-116 | | EB6116 | 22 |

MULTI POCKET EMITTER PARTS

| | TEMESCAL | TELEMARK | Fil-Tech | |
|-----------------------|-------------|-----------------------|----------|-------|
| Anode | 0204-0292-0 | 273-0003-1 | EB0292 | \$ 70 |
| Beam Former | 0415-1822-0 | 273-0004-2 | EB1822 | 35 |
| Beam Former, Tantalum | 0303-9392-0 | N/A | EB9392 | 50 |
| Cathode Block, Left | 0303-9362-0 | 273-0031-1 | EB9362 | 110 |
| Cathode Block, Right | 0303-9372-0 | 273-0032-1 | EB9372 | 110 |
| Emitter Support Bar | 0204-0332-0 | 273-0018-1 | EB0332 | 60 |
| Filament Clamp | 0303-9382-0 | 273-0033-3/273-0033-4 | EB9382 | 25 |
| Filament Bus Bar Set | 0204-0343-0 | 273-0035-1/273-0036-1 | EB0343 | 80 |
| Insulator Shield | 0204-0302-0 | 273-0011-1 | EB0302 | 15 |
| Mounting Bar | 0204-0322-0 | 273-0017-1 | EB0322 | 45 |
| Mounting Bracket | 0204-0312-0 | 273-0019-1 | EB0312 | 70 |
| Seal, Quad Ring | 2108-0215-0 | N/A | EB0215 | 2 |
| Seal, RL Gasket | 0020-4811-2 | N/A | EB4811 | 6 |

New! HIGH PERFORMANCE EMITTER PARTS

| | TEMESCAL | Fil-Tech | |
|---------------------------|-------------|----------|-------|
| Anode | 0916-8192-0 | EB8192 | \$ 75 |
| Anode Mounting Bracket | 0916-8212-0 | EB8212 | 75 |
| Beam Former, left | 0916-8172-0 | EB8172 | 40 |
| Beam Former, Right | 0916-8182-0 | EB8182 | 40 |
| Beam Former Spacing Gauge | 0916-8281-0 | EB8281 | 10 |
| Cathode Block Insulator | 0916-8251-0 | EB8251 | 30 |
| Cathode Block, Left | 0916-8142-0 | EB8142 | 110 |
| Cathode Block, Right | 0916-8152-0 | EB8152 | 110 |
| Emitter Mounting Bar | 0916-8232-0 | EB8232 | 70 |
| Emitter Mounting Bracket | 0916-8222-0 | EB8222 | 70 |
| Emitter Support Bar | 0916-8202-0 | EB8202 | 80 |
| Filament Bus Bar, Left | 0916-8243-1 | EB8243L | 50 |
| Filament Bus Bar, Right | 0916-8243-2 | EB8243R | 50 |
| Filament Clamp | 0916-8162-0 | EB8162 | 25 |



EMITTER ASSEMBLIES

| | TEMESCAL | TELEMARK | Fil-Tech | |
|-----------------------------|-------------|------------|----------|-------|
| High Performance | 0916-8294-0 | N/A | EB8294 | \$800 |
| Multi Pocket | 0204-0284-0 | 273-0150-1 | EB0284 | 700 |
| Single Pocket | 0304-1914-0 | 253-0150-1 | EB1914 | 700 |
| Emitter rebuilding service* | N/A | N/A | EBREBLD | 350 |

*Includes glass beading and chemically cleaning all metal parts, replacing filament, screws (all vented), insulators, and reassembling. Metal parts not included.

ELECTROMAGNETIC COIL

| | TEMESCAL | Fil-Tech | |
|----------|-------------|----------|---------|
| Coil New | 0312-6923-0 | EB6923 | \$1,450 |





CRUCIBLE LINERS

SAVE TO 40%

Graphite

Tungsten

Molybdenum

GRAPHITE

| SIZE | REMARKS | TEMESCAL | TELEMARK | Fil-Tech | |
|------|----------|-------------|------------|----------|------|
| 7CC | | 0627-6172-1 | 271-7007-1 | EC0007-1 | \$40 |
| 15CC | | 0627-6172-3 | 271-7015-1 | EC0015-1 | 50 |
| 25CC | 4 Pocket | 0627-6172-5 | 271-7025-1 | EC4025-1 | 60 |
| 25CC | 6 Pocket | N/A | 271-7025-2 | EC6025-1 | 65 |
| 30CC | W/Web | N/A | 271-7030-1 | ECW030-1 | 75 |
| 30CC | W/O Web | N/A | 271-7030-2 | EC0030-1 | 75 |
| 40CC | | 0627-6172-7 | 271-7040-1 | EC0040-1 | 80 |

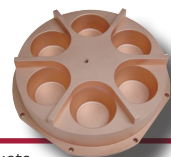
TUNGSTEN

| SIZE | REMARKS | TEMESCAL | TELEMARK | Fil-Tech | |
|------|----------|-------------|------------|----------|-------|
| 7CC | | 0627-6152-1 | 271-7008-9 | EC0007-2 | \$150 |
| 15CC | | 0627-6152-3 | 271-7016-9 | EC0015-2 | 155 |
| 25CC | 4 Pocket | 0627-6152-5 | 271-7026-9 | EC4025-2 | 225 |
| 25CC | 6 Pocket | 0627-6152-6 | 271-7027-9 | EC6025-2 | 250 |
| 30CC | W/Web | N/A | N/A | ECW030-2 | 165 |
| 30CC | W/O Web | N/A | N/A | EC0030-2 | 275 |
| 40CC | | 0627-6152-7 | 271-7041-9 | EC0040-2 | 375 |

MOLYBDENUM

| SIZE | REMARKS | TEMESCAL | TELEMARK | Fil-Tech | |
|------|----------|-------------|------------|----------|-------|
| 7CC | | 0627-6162-1 | 271-7007-3 | EC0007-3 | \$110 |
| 15CC | | 0627-6162-3 | 271-7015-3 | EC0015-3 | 100 |
| 25CC | 4 Pocket | 0627-6162-5 | 271-7025-3 | EC4025-3 | 145 |
| 25CC | 6 Pocket | N/A | 271-7025-4 | EC6025-3 | 180 |
| 30CC | W/Web | N/A | 271-7030-3 | ECW030-3 | 185 |
| 30CC | W/O Web | N/A | 271-7030-4 | EC0030-3 | 180 |
| 40CC | | 0627-6162-7 | 271-7040-3 | EC0040-3 | 170 |

Aluminum Oxide Boron Nitride Copper Intermetallic Vitreous Carbon
And Custom Liners Available. Call 800-743-1743 or email paula@filtech.com.



CRUCIBLES

All Crucibles and Covers are OFHC

| | | | | Fil-Tech | |
|----------|----------------|-------------|---------|----------|---------|
| TEMESCAL | 4x15cc Pockets | 0715-8444-0 | \$1,540 | EB8444 | \$1,450 |
| | 6x15cc Pockets | 0715-8504-0 | 1,965 | EB8504 | 1,800 |
| | 4x25cc Pockets | 0715-8454-0 | 1,540 | EB8454 | 1,450 |
| TELEMARK | 6x15cc Pockets | 271-0255-3 | \$2,000 | EB0255-3 | \$1,800 |
| | 4x25cc Pockets | 271-0220-3 | 1,750 | EB0220-3 | 1,550 |
| | 6x25cc Pockets | 271-0257-3 | 2,000 | EB0257-3 | 1,800 |

CRUCIBLE COVERS

| | | | | Fil-Tech | |
|----------|-----------|-------------|-------|----------|-------|
| TEMESCAL | 4 Pockets | 0715-8143-0 | \$595 | EB8143 | \$600 |
| | 6 Pockets | 0715-8153-0 | 595 | EB8153 | 650 |
| TELEMARK | 4 Pockets | 271-0073-1 | \$475 | EB0073 | \$475 |
| | 6 Pockets | 271-0074-1 | 475 | EB0074 | 475 |

SILICON DIOXIDE

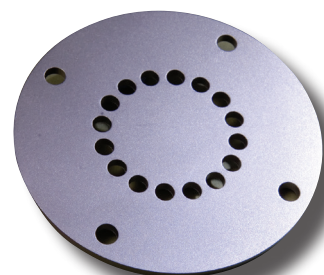
High purity SiO₂ specifically designed for electron beam evaporation

SPECIFICATIONS

| | | | |
|--------|----------|------------------|------------------------------|
| Purity | 99.99% | Melting point | 1713°C |
| Form | Granular | Refractive index | n _D 1.46 @ 500 nm |

ORDERING INFORMATION

| PART NO. | GRANULAR SIZE (mm) | PRICE |
|----------|--------------------|------------|
| EM0024-5 | 2-4 | 500g \$100 |



ION SOURCE PARTS VEECO MARK I & MARK II, ION TECH & SATISLOH

SAVE TO 25%

FILAMENTS

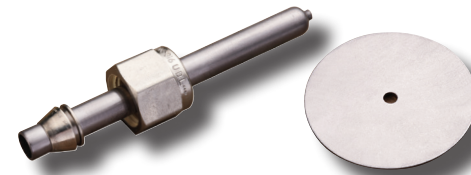
| | VEECO | | SATISLOH | Fil-Tech | |
|---------|--------|--------|----------------|----------|-----|
| MARK I | A30274 | \$7.28 | A7500800Q-131M | IS30274 | \$6 |
| MARK II | A16962 | 6.00 | A7500800Q-101M | IS16962 | 5 |

| | VEECO/ION TECH | | Fil-Tech | |
|-----------------|----------------|------|----------|------|
| 3&5cm Cathode | 0503-107 | \$50 | IS3107 | \$12 |
| 3cm Neutralizer | 0503-063 | | IS3063 | 12 |
| 5cm Neutralizer | 0505-001-003 | 64 | IS1003 | 6 |

GAS DISTRIBUTORS

| | VEECO | | SATISLOH | Fil-Tech | |
|-----------------------|-------|----------------|------------|----------|--|
| MARK I | | | | | |
| B18005-1 Graphite | \$356 | A7500800Q-134M | IS18005G | \$100 | |
| B18005-3 Stainless | 75 | A7500800Q-135M | IS18005S | 75 | |
| B18005-5 Titanium | 455 | | IS18005T | 100 | |
| MARK I MODIFIED HOLES | | | | | |
| B18005-1A Graphite | | | IS18005G-1 | \$100 | |
| B18005-2A Stainless | | | IS18005S-1 | 90 | |
| B18005T-1 Titanium | | | IS18005T-1 | 100 | |
| MARK II | | | | | |
| B16931-1 Graphite | \$554 | A7500800Q-174M | IS16931G | \$240 | |
| B16931-2 Stainless | 109 | A7500800Q-154M | IS16931S | 65 | |
| B16931-5 Titanium | 209 | A7500800Q-202M | IS16931T | 100 | |

Call 800-743-1743 For Complete Listing Of MARK I & II Parts.



CATHODE TIP & KEEPER

| | VEECO | | Fil-Tech | |
|---------------------|-------|--|----------|-------|
| MARK II Cathode Tip | | | | |
| B17968/SP | \$380 | | IS17968 | \$310 |
| MARK II Keeper | | | | |
| A17973 | \$157 | | IS17973 | \$70 |

Contact us for a complete list of Mark I, I+ and Mark II, II+ replacement parts and Kaufman and Robinson replacement parts.

Call 800-743-1743 or email paula@filtech.com.

INSULATORS

| | VEECO | | SATISLOH | Fil-Tech | |
|-------------|---------|--------|----------------|----------|------|
| MARK I | 1451001 | \$7.82 | A7500800Q-136M | IS1001 | \$6 |
| MARK I & II | 10-32M | | A7500800Q-167M | IS1032 | 6.50 |
| | 10-32F | | | IS1032F | 10 |
| | 6-32F | | | IS0632F | 12 |
| | 6-32M | | | IS0632M | 8 |
| | 6-MS | 8.50 | | IS06MS | 8 |
| | 1/4-20M | 15.00 | | IS2520M | 12 |
| | 1/4-20F | 15.00 | | IS2520F | 12 |

VEECO/ION TECH 3 & 5cm Fil-Tech

| | | | | |
|-----------------|--------|--|--------|-----|
| 0500-035 Male | \$7.35 | | IS0035 | \$6 |
| 0500-036 Female | 9.80 | | IS0036 | 7 |
| 0500-037 Male | 8.50 | | IS0037 | 7 |

ANODES

| | VEECO | | SATISLOH | Fil-Tech | |
|--------------------|-------|----------------|----------|----------|--|
| MARK I | | | | | |
| B18003-1 Graphite | \$74 | A7500800Q-132M | IS18003G | \$65 | |
| B18003-2 Stainless | 55 | A7500800Q-133M | IS18003S | 55 | |
| MARK II | | | | | |
| B16933-1 Graphite | \$196 | A7500800Q-175M | IS16933G | \$160 | |
| B16933-2 Stainless | 144 | A7500800Q-166M | IS16933S | 85 | |

MARK II PARTS

New!

| MARK II | DESCRIPTION | Fil-Tech | PRICE |
|---------|----------------------|----------|-------|
| B16923 | Pole Piece, Outer | IS16923 | \$202 |
| B16927 | Alnico-5 Magnet | IS16927 | 67 |
| B16928 | Support Plate | IS16928 | 361 |
| B16929 | Baffle | IS16929 | 26 |
| B16930 | Spacer | IS16930 | 28/3 |
| B16932 | Support, Back Anode | IS16932 | 185 |
| B16934 | Support, Front Anode | IS16934 | 198 |
| B16935 | Tie Rod, Short | IS16935 | 38/2 |
| B16936 | Tie Rod, Long | IS16936 | 38/2 |
| B16937 | Cathode Connection | IS16937 | 105/2 |
| B16938 | Anode Connection | IS16938 | 19 |
| B16939 | Support, Cathode | IS16939 | 122/2 |
| B16940 | Knob, Hold Down | IS16940 | 50/2 |
| B16944 | Retainer, Cable | IS16944 | 106/3 |
| B16946 | Cover, Empty Socket | IS16946 | 70 |
| B16947 | Work Station | IS16947 | 100 |
| B29958 | Pin, Alignment | IS29958 | 42/2 |
| B29959 | Screw, Hold Down | IS29959 | 72/2 |
| B29960 | Socket | IS29960 | 298 |
| B29961 | Plug | IS29961 | 395 |